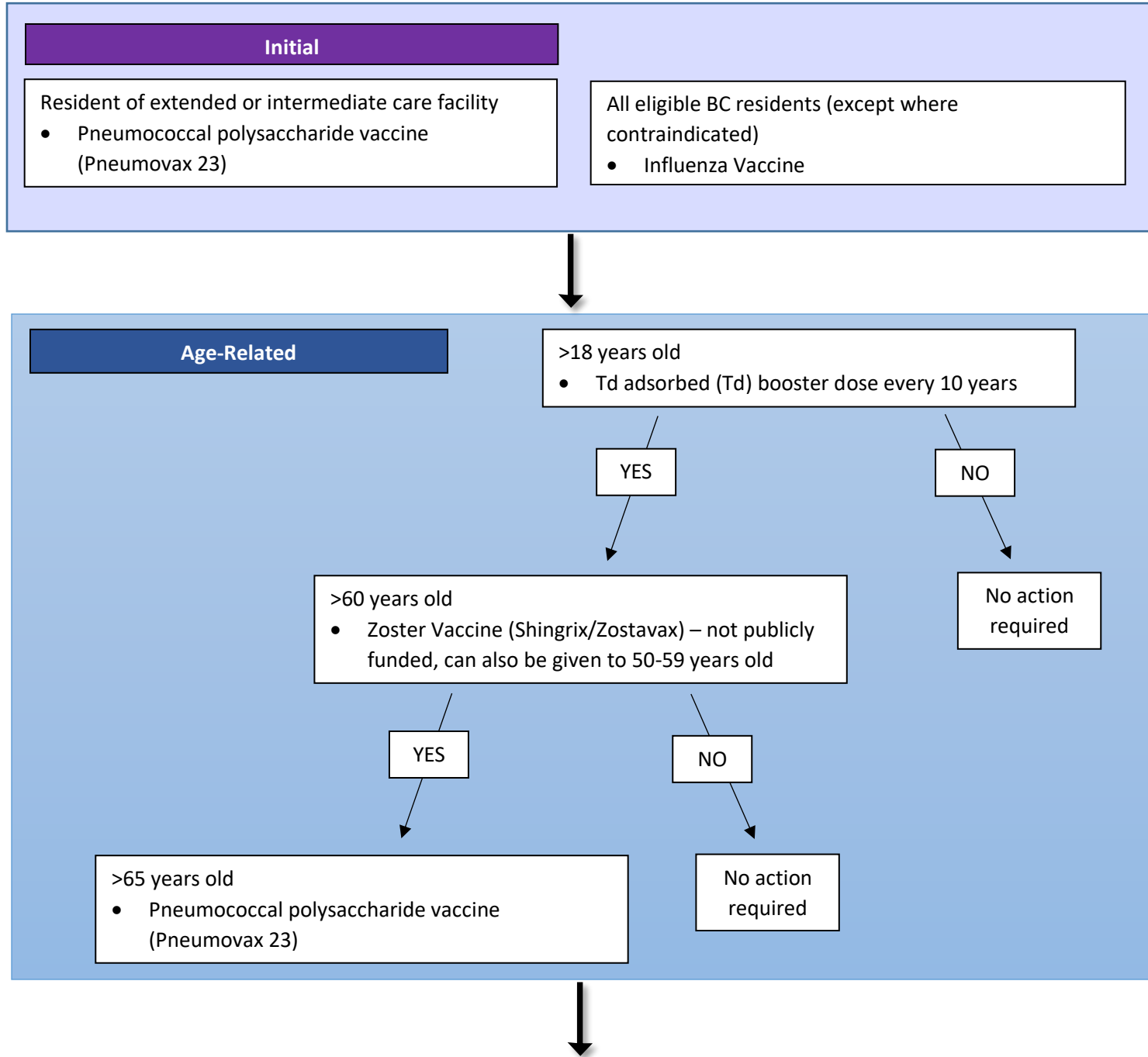


## VACCINE ASSESSMENT FLOWCHART



## Chronic Medical Conditions

### Type 1 or Type 2 Diabetes

- Pneumococcal polysaccharide vaccine (Pneumovax 23)

### Chronic Heart Disease

- Pneumococcal polysaccharide vaccine (Pneumovax 23)

### HIV

- Haemophilus b Conjugate (Hiberix)
- Hepatitis A + Hepatitis B
- HPV (Gardasil9) – only publicly funded for 9-26yo
- Pneumococcal conjugate vaccine (Pevnar 13) **AND** Pneumococcal polysaccharide vaccine (Pneumovax 23) + 1 time revaccination after 5 years

### Chronic lung disease (including asthma)

- Pneumococcal polysaccharide vaccine (Pneumovax 23)

### Immunosuppressive therapy or immunosuppression related to disease

- Haemophilus b Conjugate (Hiberix)
- Pneumococcal conjugate vaccine (Pevnar 13) – recommended but not publicly funded, Pneumococcal polysaccharide vaccine (Pneumovax 23) + 1 time revaccination after 5 years

### Chronic Kidney Disease (including pre-dialysis, dialysis, kidney failure, nephrotic syndrome)

- Hepatitis B
- With chronic kidney failure: Pneumococcal polysaccharide vaccine (Pneumovax 23) + 1 time revaccination after 5 years
- With nephrotic syndrome: Pneumococcal conjugate vaccine (Pevnar 13) – recommended but not publicly funded, Pneumococcal polysaccharide vaccine (Pneumovax 23) + 1 time revaccination after 5 years